

Sample96 Quick Scan

fast and easy plate scan
with **sample database**

Data Collection

- scans a rack with 96 samples in about **1 second**
- optional 2D barcode recognition for rack identification
- SBS-formats 24, 32, 48 and 96
- free nonSBS-formats optional

User Interface

- optimized user interface
- sample highlighting (pos / neg)
- administration area

Standard Export

- export files in csv and txt format
- stores rack id, position and 2D barcode from all captured samples

Extended Export

- direct connection to existing database
- direct connection to laboratory devices
- report generator for pdf and html files

Flexibility

- integration to existing LIMS possible
- definition of data translation

Editor

- manual editing and capturing of samples is possible

Space Saving

- A small design allows installation in every workplace



Sample96 Quick Scan is one of the fastest SBS rack data collectors for 2D barcodes. It is possible to read multiple tubes with data matrix barcodes on the bottom and collect their data for later use.

It is also possible to store individual additional information to each sample for quality management and LIMS integration.

The enhanced export module allows you to directly generate collection reports with the captured codes and their individual information for documentation.

The main parts of the Sample96 Quick Scan

data collection

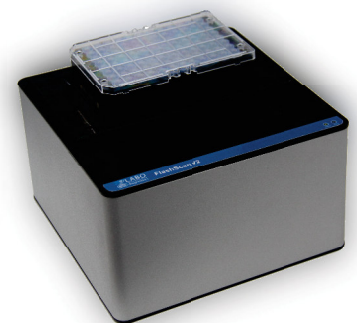
The Sample96 standard platform captures a entire rack in a single pass. Max 96 samples labeled with Data Matrix codes are recognized in about **1 second**. All racks in the SBS standard (24, 32, 48, 96) can be processed by the system. On request, masks for other formats can be offered. With an optional extension of the scanner solution it's possible to detect a 2D rack id in the same scanning process.

standard export

When capturing a sample rack, a csv file is created that contains the rack ID, all positions, 2D barcode data of the samples and the name of the laboratory employee.

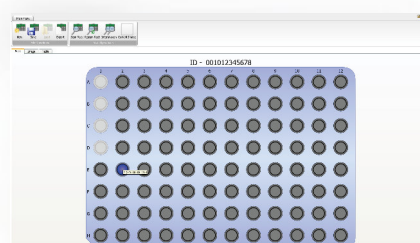
report generation

For easy storage of captured racks, custom reports can be generated with the scanning software. The representation of the rack and sample data can be defined by description files. The export files are available in csv, txt, pdf and html files.



editor

After successful acquisition, the aquired barcode data can be edited by the user. Furthermore, the software provides an ability to assign individual information for each sample for quality management and LIMS integration.



administration area

To avoid affection of configuring the software, an administration area can be determined. This section can only be opened by a particular person or a particular group of people and is used to configure the software. This feature requires an optional administration key.

database

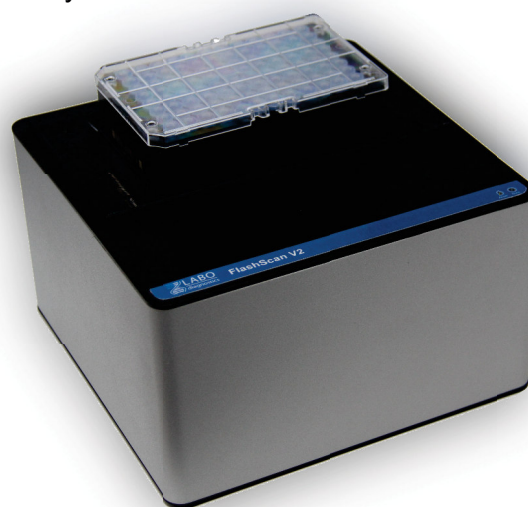
Through the integrated database connector, captured sample- and rack-data of the scanning software can be sent directly through an ODBC interface to an existing database.

space-saving

The system is set up at the appropriate workplace and is characterized by its very small space-saving design of 20 cm x 20 cm x 11,5 cm.

simple user interface

During the whole sample capturing process, the user is supported by the sample user interface and would be guided step by step through the acquisition process. After an successful acquisition, the user can directly see whether a sample has been properly recognized, not recognized or if no tube was available in the cavity.



Order Information

Sample96 Quick Scan

Item-Nr.	Description
QS-SAMP96V2	scanner hardware inkl. software.

Options

Item-Nr.	Description
QS-001OPT	1D rack id barcode reader option
QS-DB0001	database extension BASIC
QS-DB0002	database extension PROFESSIONAL
QS-DB0002	database extension ENTERPRISE

Sample96 Quick Scan Consumables

Item-Nr.	Description
CR-000001	10 racks with 96 cryo tubes incl. cap and cover for the cryo rack
Optional:	
CR-00075A-96	0.75 ml cryo tubes (PP) with internal thread
CR-00100A-96	1.00 ml cryo tubes (PP) with internal thread
CR-00140A-96	1.40 ml cryo tubes (PP) with internal thread
CR-00200A-96	2.00 ml cryo tubes (PP) with internal thread
CR-00200B-96	2.00 ml cryo tubes (PP) with external thread
CR-00350B-96	3.50 ml cryo tubes (PP) with external thread
Free of detectable DNase, RNase, human DNA	

Technical Specifications

Requirements

Operating System	Windows 8.1, WIndows 8, Windows 7
2D Barcode Reader	Standard and inverted 2D DotMatrix Barcodes
Export Formats	PDF, CSV, TXT, HTML
Connectors	USB2.0

Rack Scanner

Dimensions (total)	200 x 200 x 115 mm
Weight (total)	1.60 kg

Our Distributor

